



# RECOMMENDATION OF **DR. MEDHA SINGH**



# Dr. Medha Singh

Massachusetts, USA

## Education & Credentials

- 2000: Bachelor of Dental Surgery (B.D.S.), Government Dental College, Rohtak, India
- 2004: Advanced Education Program in Periodontology, Tufts University School of Dental Medicine
- 2005: Master of Science (M.S.), Tufts University School of Dental Medicine
- 2010: Doctor of Dental Medicine (D.M.D.), Tufts University
- 2011: Fellowship in Oral Implantology (ITI Scholar), Harvard School of Dental Medicine
- Since 2006: Board-Certified Periodontist (Diplomate, American Board of Periodontology)

## Professional Experience

- 2004 - 2010: Faculty Member and Assistant Professor, Tufts University School of Dental Medicine
- 2011 - 2015: Instructor in Periodontology, Harvard School of Dental Medicine
- Since 2010: Practicing periodontist in multispecialty private practices in Massachusetts
- Since 2010: Provider of periodontal and surgical care for underserved Medicaid populations
- Since 2004: Organizer and speaker, North Street Perio Study Club (AGD-accredited continuing education for dental hygienists)

## Clinical Expertise

- Periodontal surgery and regenerative procedures
- Dental implant therapy (incl. sinus lifts, grafting, soft tissue management)
- Management of salivary hypofunction and Sjögren's syndrome
- Oral surgery (e.g., wisdom tooth extraction, crown lengthening)
- Licensed in conscious sedation and nitrous oxide

## Academic Contributions

- Research focus on inflammation, salivary disorders, and implantology
- Presenter at major conferences (AADR, IADR, AAOM, etc.)
- Editorial board member for multiple dental journals
- Author of peer-reviewed articles and book chapters
- Member of scientific committees and dental honor societies (e.g., Pierre Fauchard Academy, Sigma Xi)



## Volunteering & Community Engagement

- Since 2005: Active volunteer in underserved communities in Boton and rural India
- Since 2010: Annual dental missions with NGO “Chaupal” in Haryana, India
- Mentor for students pursuing dental careers
- Organizer of oral health education programs, screenings, and prevention initiatives

## Selected Honors & Awards

- 2010-2023: Multiple recognitions as “Top Dentist” in Massachusetts
- 2022: Top Dentist, Boston Magazine
- 2024: Inducted into the League of Leading Ladies in Dentistry
- Additional recognitions from academic institutions and professional dental organizations

## Leadership & Professional Involvement

- Former Chair, Chair-Elect, and Secretary, Periodontics Section – ADEA
- Executive Committee Member & Newsletter Editor – Geriatric Oral Research Group, IADR
- Session Chair and Judge at AADR/IADR scientific meetings
- Member of editorial boards and peer-review panels for major dental journals
- Active participant in national committees (e.g., Council on Dental Education, MDS)
- Graduate of the Massachusetts Dental Society Leadership Institute
- Member of academic groups such as the Organization of Teachers of Oral Medicine

SURGICAL SET nach Dr. Medha Singh  
 SURGICAL SET in accordance to Dr. Edgar Cabrera  
 SURGICAL SET selon Dr. Edgar Cabrera



Art. Nr.   Item no.   Articles-Réf.-	Bezeichnung   Description   Description
<b>1151-30 F</b>	Skalpellgriff # 3   gerade   passend für 1 Klinge Scalpel handle # 3   straight   suitable for 1 blade Manche pour bistouri # 3   droit, pour 1 lame
<b>888-B1 F</b>	Rasporium Buser # 1   171 mm   4.0 mm / 4.0 mm Periosteal elevator Buser # 1   171 mm   4.0 mm / 4.0 mm Raspatoire Buser # 1   171 mm   4.0 mm / 4.0 mm
<b>888-30 F</b>	Rasporium Molt # 3   171 mm   5.0 mm / 4.5 mm Periosteal elevator Molt # 3   171 mm   5.0 mm / 4.5 mm Raspatoire Molt # 3   171 mm   5.0 mm / 4.5 mm
<b>920-60 F</b>	Knochenkürette Lucas #0R-0L   171 mm   2.7 mm / 2.7 mm   gezahnt Bone curette Lucas #0R-0L   171 mm   2.7 mm / 2.7 mm   serrated Curette chirurgicale Lucas #0R-0L   171 mm   2.7 mm / 2.7 mm   dentelés
<b>920-61 F</b>	Knochenkürette Lucas #1R-1L   171 mm   2.7 mm / 2.7 mm   gezahnt Bone curette Lucas #1R-1L   171 mm   2.7 mm / 2.7 mm   serrated Curette chirurgicale Lucas #1R-1L   171 mm   2.7 mm / 2.7 mm   dentelés
<b>920-62 F</b>	Knochenkürette Lucas # 2R-2L   171 mm   3.3 mm / 3.3 mm   gezahnt Bone curette Lucas # 2R-2L   171 mm   3.3 mm / 3.3 mm   serrated Curette chirurgicale Lucas # 2R-2L   171 mm   3.3 mm / 3.3 mm   dentelés
<b>6825-10 F</b>	Hohlmeißelzange Friedmann   145 mm   30 ° Bone rongeur Friedmann   145 mm   30 ° Pincés-gouges Friedmann   145 mm   30 °
<b>998-20</b>	Wangenabhalter „University of Cawood-Minnesota“   155 mm Cheek retractor „University of Cawood-Minnesota“   155 mm Ecarteur des joues „University of Cawood-Minnesota“   155 mm
<b>RH 36-37 F</b>	Parodontal Meißel # 36/37 „Rhodes“   171 mm   3.0 mm / 3.0 mm Periodontal chisels # 36/37 „Rhodes“   171 mm   3.0 mm / 3.0 mm Ciseaux parodontaux # 36/37 „Rhodes“   171 mm   3.0 mm / 3.0 mm
<b>2500-21 F</b>	Membran Lift / Granulatstopfer „Mazor“ # 6   171 mm   6.0 mm / 2.0 mm Membrane lift / Granulate plugger „Mazor“ # 6   171 mm   6.0 mm / 2.0 mm Lift membrane / Foulloir à granulat „Mazor“ # 6   171 mm   6.0 mm / 2.0 mm
<b>2815-27 F</b>	Bone Pusher   171 mm   2.7 mm   gerade   flach   graduiert, nicht kalibriert   8-10-12-14-16-18 Bone pusher   171 mm   2.7 mm   straight   flat   graduated, non-calibrated   8-10-12-14-16-18 Foulloir-os   171 mm   2.7 mm   droit   plat   gradué   non calibré   8-10-12-14-16-18
<b>2815-32 F</b>	Bone Pusher   171 mm   3.2 mm   gerade   flach   graduiert, nicht kalibriert   8-10-12-14-16-18 Bone pusher   171 mm   3.2 mm   straight   flat   graduated, non-calibrated   8-10-12-14-16-18 Foulloir-os   171 mm   3.2 mm   droit   plat   gradué   non calibré   8-10-12-14-16-18
<b>2815-42 F</b>	Bone Pusher   171 mm   4.2 mm   gerade   flach   graduiert, nicht kalibriert   8-10-12-14-16-18 Bone pusher   171 mm   4.2 mm   straight   flat   graduated, non-calibrated   8-10-12-14-16-18 Foulloir-os   171 mm   4.2 mm   droit   plat   gradué   non calibré   8-10-12-14-16-18
<b>2815-50 F</b>	Bone Pusher   171 mm   5.0 mm   gerade   flach   graduiert, nicht kalibriert   8-10-12-14-16-18 Bone pusher   171 mm   5.0 mm   straight   flat   graduated, non-calibrated   8-10-12-14-16-18 Foulloir-os   171 mm   5.0 mm   droit   plat   gradué   non calibré   8-10-12-14-16-18
<b>2302-51 F</b>	Chirurgische Mikro-Pinzette   1:2   171 mm   0.8 mm Surgical micro-forceps   1:2   171 mm   0.8 mm Micro-Pince chirurgicale   1:2   171 mm   0.8 mm
<b>1170-65 F</b>	Chirurgische Mikro-Schere „Gomel“   160 mm   gebogen   fein gezahnt Operating micro-scissors „Gomel“   160 mm   curved   fine serrated Micro-ciseaux chirurgicaux „Gomel“   160 mm   courbés   denture fine
<b>2550-60</b>	Mischdose für Knochenmaterial   25 cc   Ø 60.0 mm Mixing bowl for bone material   25 cc   Ø 60.0 mm Cuvette de mélange pour mat. osseux   25 cc   Ø 60.0 mm
<b>2500-81 F</b>	Membran Platzierungsinstrument „Buser“   171 mm   2.0 mm / 2.0 mm Membrane positioning instrument „Buser“   171 mm   2.0 mm / 2.0 mm Instrument pour placement des membranes „Buser“   171 mm   2.0 mm / 2.0 mm
<b>2661-10-US</b>	Zylinder-Ampullen-Spritze   Edelstahl   1.8 ml   seitlich beladbar Cartridge syringe   Stainless steel   1.8 ml   side loading Seringue d'ampoules   Inox   1.8 ml   chargeable latéralement
<b>9200-10</b>	GPM Wash Tray (275 x 180 x 35 mm)   14 Instrumente   3 Brücken   2 Halter   mit Haltegriff GPM Wash Tray (275 x 180 x 35 mm)   14 instruments   3 bridges   2 holder   with handhold GPM Wash Tray (275 x 180 x 35 mm)   14 instruments   3 ponts   2 supports   avec poignée de maintien

## SKALPELLKLINGENHALTER

SCALPEL BLADE HOLDERS  
MANCHES DE BISTOURIS

**1151-30 F**



# 3 | SL | 158 mm

gerade, passend für 1 Klinge, leichter Griff  
straight, suitable for 1 blade, lightweight handle  
droit, pour 1 lame, poignée légère



## RASPATORIUM

PERIOSTEAL ELEVATOR  
RASPATOIRE

**888-B1 F**



Buser # 1 | 171 mm

4.0 mm



4.0 mm

**888-30**



Molt # 3 | 171 mm

5.0 mm



4.5 mm

## KNOCHENKÜRETTEN - GEZAHNT

BONE CURETTES - SERRATED

CURETTES CHIRURGICALES - DENTELÉS

Die Zahnung ermöglicht ein besseres Greifen und Lösen von Knochenrückständen, welche sonst nur schwer entfernt werden können. Eignet sich hervorragend zur Entfernung von Zysten. Außerdem verursacht sie eine leichte Blutung, die eine bessere Einheilung unterstützt.

The serration enables better gripping and loosening of bone residues that can otherwise only be removed with difficulty. Great for removing cysts. Furthermore, it causes a slight bleeding with result of a better healing.

La denture permet une meilleure saisie et un meilleur détachement des résidus osseux difficiles à enlever sinon. Idéal pour éliminer les kystes. De plus, les dents fines causent un léger saignement pour une meilleure guérison.

### 920-60 F



Lucas #0R-0L | 171 mm



### 920-61 F



Lucas #1R-1L | 171 mm



### 920-62 F



Lucas # 2R-2L | 171 mm



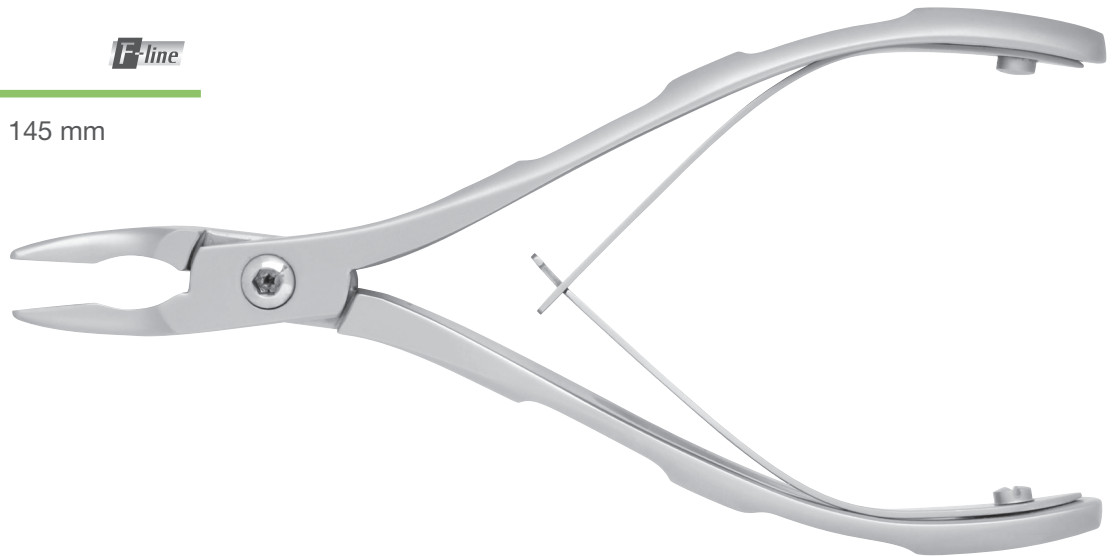
## HOHLMEISSELZANGE

BONE RONGEUR  
PINCE-GOUGE

**6825-10 F**



Friedmann | 30 ° | 145 mm



## WANGENABHALTER

CHEEK RETRACTORS  
ECARTEURS DES JOUES

**998-20**

University of Cawood-Minnesota | 152 mm



Dieser sehr leichte Wangenabhalter wurde für schwer zugängliche Mundbereiche entwickelt. Er wird sehr gerne bei offenen Kürettagen eingesetzt.

This light weight cheek retractor was developed for areas which are difficult to reach. It is often used in open curettage.

Ce rétracteur de joue très léger a été conçu pour les zones buccales difficiles d'accès. Il est particulièrement apprécié pour les curettages ouverts.

SURGICAL SET nach Dr. Medha Singh  
SURGICAL SET in accordance to Dr. Edgar Cabrera  
SURGICAL SET selon Dr. Edgar Cabrera

## PARODONTAL-MEISSEL

PERIODONTAL CHISELS  
CISEAUX PARODONTAUX

**RH 36-37 F**



# 36/37 Rhodes | Back Action | 171 mm



Der Meißel empfiehlt sich zum atraumatischen Abtragen von anliegendem Knochenmaterial und ist besonders geeignet für die hinteren distalen Molaren. (ziehende Anwendung)

The chisel is recommended for atraumatic removal of bone material attached to the tooth and is particularly suited for the use at the rear distal molars. (pulling use)

Le ciseau à os est recommandé à enlever de manière atraumatique le matériel osseux dans les zones distales des molaires Utilisation tirante.

## KNOCHENAPPLIKATION

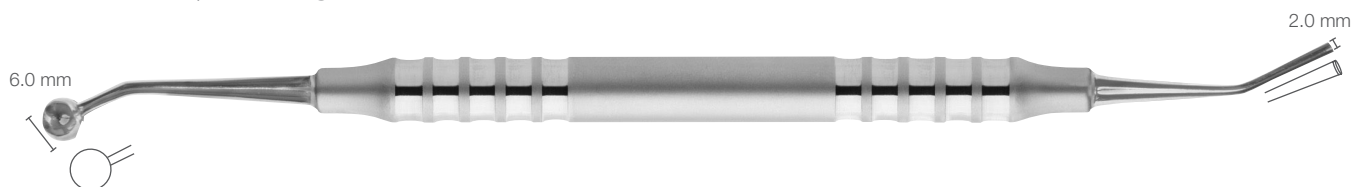
BONE APPLICATION  
INSTRUMENTS ET APPLICATEURS POUR L'AUGMENTATION

**2500-21 F**







Mazor # 6 | 171 mm

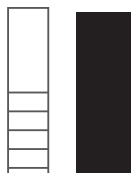
Membran Lift | Granulatstopfer  
Membrane lift | Granulate plugger  
Lift membrane | Fouloir à granulat



## BONE PUSHER

BONE PUSHER  
FOULOIRS

<b>2815-27 F</b>		2.7 mm
<b>2815-32 F</b>		3.2 mm
<b>2815-42 F</b>		4.2 mm
<b>2815-50 F</b>		5.0 mm
8-10-12-14-16-18		171 mm



gerade, flach, graduiert, nicht kalibriert  
 straight, flat, graduated, non-calibrated  
 droit, plat, gradué, non calibré



## MIKRO-PINZETTE - CHIRURGISCH

MICRO-FORCEPS - SURGICAL  
MICRO PINCES - CHIRURGICALE

**2302-51 F**





0.8 mm | 1:2 | 171 mm



Chirurgische Mikro-Pinzette mit 1:2-Zahnung fixiert Gewebe sicher ohne starken Druck und verhindert Quetschung. Für feine Strukturen wie Gefäße und Nerven ist sie ungeeignet - hier eignet sich die anatomische Pinzette besser.

The surgical micro forceps with 1:2 teeth securely grip tissue without the need for excessive pressure and help prevent crushing. However, they are not suitable for delicate structures such as vessels and nerves – in such cases, anatomical forceps are the better choice.

La pince microchirurgicale avec denture 1:2 fixe les tissus de manière sûre sans exercer une pression excessive et évite les écrasements. Elle n'est pas adaptée aux structures fines telles que les vaisseaux et les nerfs – une pince anatomique est ici plus appropriée.

SURGICAL SET nach Dr. Medha Singh  
SURGICAL SET in accordance to Dr. Edgar Cabrera  
SURGICAL SET selon Dr. Edgar Cabrera

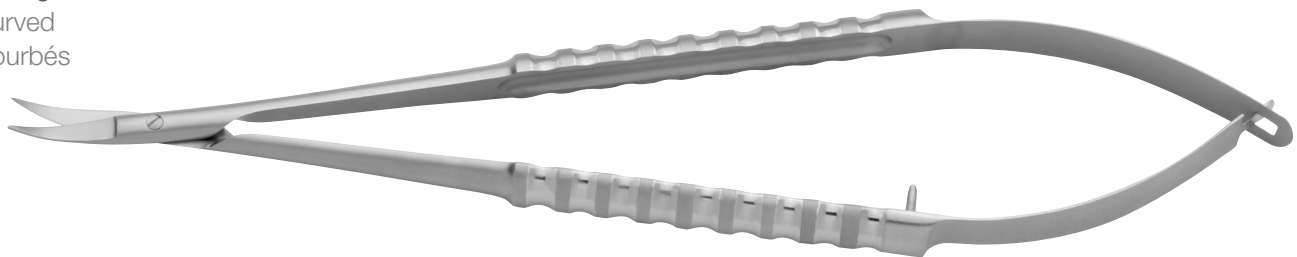
## SCHEREN FÜR DIE MINIMALINVASIVE CHIRURGIE

SCISSORS FOR MINIMALLY INVASIVE SURGERY  
CISEAUX POUR LA CHIRURGIE INVASIVE MINIMISÉE

**1170-65 F**  

Gomel | 170 mm

gebogen  
curved  
courbés



## MISCHDOSE FÜR KNOCHENMATERIAL

MIXING BOWL FOR BONE MATERIAL  
CUVETTE DE MÉLANGE POUR MATÉRIAU OSSEUX

**2550-60**

28 mm | Ø 60 mm | max. 25 cc



## KNOCHENAPPLIKATION

BONE APPLICATION  
INSTRUMENTS ET APPLICATEURS POUR L'AUGMENTATION

**2500-81 F** 

Buser | 171 mm

Membran Platzierungsinstrument  
Membrane positioning instrument  
Instrument pour placement des membranes



## ZYLINDER-AMPULLEN-SPRITZEN | EDELSTAHL

CARTRIDGE SYRINGES | STAINLESS STEEL

SERINGUES À AMPOULES CYLINDRIQUES | INOX

### 2661-10-US

1.8 ml | 141 mm

seitlich beladbar  
side loading  
chargeable latéralement

Mit Aspiration und Pfeilspitze, US-Gewinde  
With aspiration and arrow tip, US thread  
Avec aspiration et pointe de flèche, filetage américain



## TRAY MIT TEFLON® STEGEN

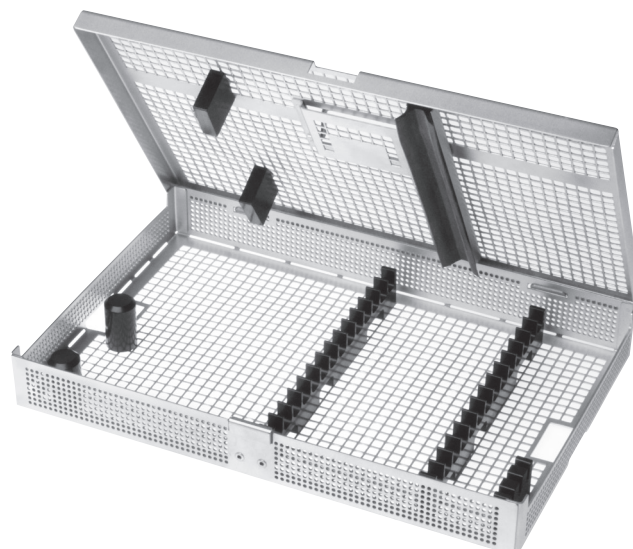
TRAY WITH TEFLON® RACKS

CASSETTE AVEC SUPPORTS EN TÉFLON®

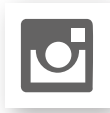
### 9200-10

275.0 x 180.0 x 35.0 mm

mit Deckel & Haltegriff, 2 Stege für 14 Instrumente, 1 Lagersteg für Pinzetten, 2 Haltebolzen  
with top cover & handhold, 2 racks for 14 instruments, 1 rack for tweezers, 2 holding bolts  
avec couvercle & poignée, 2 supports pour 14 instruments, 1 support pour précelles, 2 plots



07/25



devemed GmbH

take-off GewerbePark 30  
78579 Neuhausen ob Eck  
Germany

Tel: +49 (0) 74 67 - 949 199 0  
info@devemed.de

[www.devemed.de](http://www.devemed.de)  
[www.devemed-dental-shop.de](http://www.devemed-dental-shop.de)